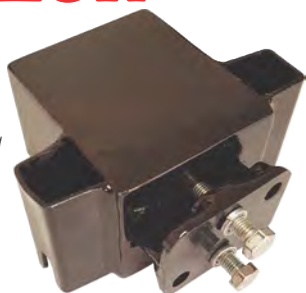


HitchKit

HitchKit-LOK

OPENS A WORLD OF FLEXIBILITY

The **HitchKit-LOK** is the basic component and building block of the **HitchKit** system and fits onto any standard 50mm towball. By its unique design it is capable of carrying a load capacity of 50kg and attaches to any of the **HitchKit** accessories.



HitchKit-MOUNT

A GREAT SPACE SAVER

A handy method of utilising wall space to keep your **HitchKit-BOX** or **HitchKit-BIKE** racks off of the floor and mounted on the wall. Utilize more than one **HitchKit** accessory and simply store them year round. A box for fishing and another for camping or tools. Why continually pack and unpack?



HitchKit-BOX

Going on holiday? 370ℓ of additional flexible packing space!

Pack in your groceries and merely take the entire box into your accommodation. Saves lengthy unpacking.

Need a dedicated fishing or tool box? Keep all your equipment together all year around and slip them onto your **HitchKit-LOK** whenever needed. Using a **HitchKit-MOUNT** simply store on the wall out of your way.



HitchKit-RAK

NOT INSIDE ON TOP

A simple yet effective way of extending your storage space for those light yet bulky items. Fitting a roof rack to your **HitchKit-BOX** lid increases your flexibility.



HitchKit-BIKE2

MAXIMUM FLEXIBILITY

A convenient addition to the **HitchKit-BOX**: the **HitchKit-BIKE**.

One flexible solution, keeping all that valuable equipment in one place safely locked away and stored on the wall out of the way using a **HitchKit-MOUNT**.



HitchKit-BIKE3

FOR THE AVID CYCLIST or WEEKEND WARRIOR

A cost effective 3 bike carrier designed for easy mount and dismount of your bikes. When not on your car use a **HitchKit-MOUNT** to store your bikes mounted onto the wall of your garage saving much needed floor space.



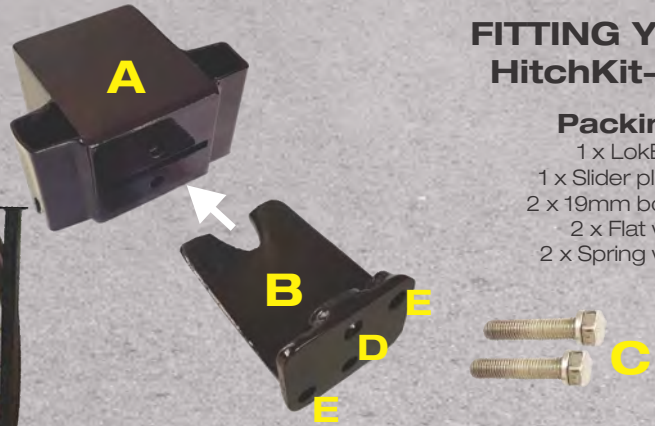
HitchKit



FITTING YOUR HitchKit-LOK

Packing list

- 1 x LokBox (A)
- 1 x Slider plate (B)
- 2 x 19mm bolts (C)
- 2 x Flat washers
- 2 x Spring washers



You will require a 19mm spanner or ratchet

1. Remove the bolts and slide out the Slider plate from the HitchKit-LOK
2. Fit the HitchKit-LOK over your 50mm tow hitch ball.
3. Pull forward to ensure a loose but snug fit.
4. Insert the Slider plate into the slot & seat snugly.
5. Assemble the washers onto the bolts provided. First the spring washer & then the flat washer.
 - Insert bolts into the top & bottom holes (D)
6. Using the 19mm spanner tighten the bolts, alternating between the bottom & top bolts.
7. Ensure that the HitchKit-LOK is 90° to the car and ground before tightening.
8. Tighten bolts to 60Nm torque (*Very tight*)
9. Your HitchKit-LOK is fitted.

If the HitchKit accessory sags when attached - tighten the bolts further.

See demonstration: www.hitchkit.co.za

REMOVING HitchKIT-LOK

1. Untighten & remove the 2 slide bolts.
2. BEWARE the HitchKit-LOK may come loose and fall, causing injury.
 - In the event that the box remains wedged insert bolts into the corner release holes (E)
3. The bolts when tightened alternatively will press onto the body and force the slide plate out.

Warranty & Disclaimer: If any defects in any component of the HitchKit accessory occur because of defective material or workmanship, the Manufacturer undertakes to repair or replace such components free of charge for a period of 12 months from date of purchase, according to the judgment of the Manufacturer.

Inspection of defects will only be done at the premises and in collaboration with authorized Dealers. The Manufacturer's responsibility is limited to this Warranty and it cannot be held responsible for personal injuries or associated duties, damage or losses that arise out of any defects.

The Manufacturer or its dealers are not responsible for damage caused by normal wear, misuse, negligence or any changes, modifications and repairs done without the Manufacturer's written approval. Noted specifically is any defect, damage or injury incurred by incorrect fitting of any HitchKit accessory or damage caused by excessive loading as shown on the warning stickers or anything not considered normal family use.

The Manufacturer or its Dealers accept no responsibility for any differences that may occur between specifications of its products and descriptions thereof included in this publication.

For full warranty details and process please refer to www.karet.co.za/hitchkit/disclaimer

Tel: 0861 77 22 22 • www.hitchkit.co.za